

The 8 foot Logic® Biosafety Cabinet. More space for your science.

Space and Flexibility

Supports automated cell culture instruments and liquid handlers, or accomodates two users.

Class II Airflow

Protects both the researcher and their work. Dual HEPA filters are 99.99+% efficient (at 0.3 microns) providing an ISO Class 5 (Grade A) environment.

Inclination Technology

Ensures all-day success. A curved airfoil with integrated armrest and sloped sash relieves strain and discomfort.

Constant Airflow Profile™ (CAP)

Continuously monitors and maintains safe inflow and downflow to protect users and samples.



Mag-Zone Area

For easy use of stainless steel Mag-Zone accessories. Easy access to pipettes, pipette aid or biohazardous waste.

Logic™ OS

Clearly displays all cabinet information on a line-of-sight display. HEPA filter life, time and airflow status keep you informed at all times.

Customizable Extras

Support your cell culture work with dual Vacu-Pass™ Ports, UV Light with timer, and up to three service fixtures per side.

Dual work surfaces

Are each 4' wide and dished to isolate and contain spills. Flat work surfaces also available.

Accessorize your Biosafety Cabinet



3033000 — Mag-Zone Pipette Rack.

Holds 4 standard lab pipettes and one standard pipette aid. Stainless steel. Designed for use in Logic biosafety cabinets.



3033100 — Mag-Zone Waste Bag Holder.

Holds one standard benchtop biowaste bag. Stainless steel. Designed for use in Logic biosafety cabinets.



3033200 — Mag-Zone Pipette Aid holder, single.

Holds one standard pipette aid. Stainless steel. Designed for use in Logic biosafety cabinets.



8024400 — Logic Cell Culture Cart.

Compact storage for common cell culture supplies like serological pipettes, gloves, lab tissues and disinfectants. Built in handles and casters boost mobility. Additional Cell Culture Cart accessories and shelves available. See full brochure.

5173800 - 8' Telescoping Base Stand.

Fully welded. Supports load up to 4000 lbs. (1814 kg). Telescoping legs are adjustable to eight height positions at installation in 1" (2.5 cm) increments to provide a working height from 30" (76 cm) to 37" (94 cm).



5190108 - Heavy Duty Caster Kit.

For converting telescoping base stands with fixed feet to mobile stands. Kit includes four 5" dia. toe-locking nylon casters that are resistant to most chemicals and easy to clean. Load rating for caster set is 1500 lbs. (680 kg). Casters add 7" - 11" (18 - 28 cm) to overall depth of the base stand.



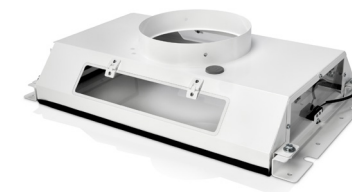
3746000 - Adjustable Footrest.

Ergonomic design reduces strain and fatigue while working. 18.5" w x 11.5" d x 8.0" h (47 x 29 x 20cm).



3889214 - Ventus II Canopy Connection.

For thimble exhausting Type A2 cabinets. NSF approved design detects insufficient exhaust in less than one second and signals Logic OS with visual and audible alarms. Adds 1.4" (3.6 cm) to cabinet height. Exhaust connection is required. **Kit comes with two 4' Ventus II canopies. Two air-tight dampers (3776800) recommended.**



LABCONCO CORPORATION

8811 Prospect Avenue
Kansas City, MO 64132
(800) 821-5525 | (816) 333-8811
labconco.com



©2025 LABCONCO CORPORATION
Printed in the U.S.A.
Design subject to change without notice.
2025/07/07