

# PuriCare<sup>®</sup>

## Laboratory Animal Research Stations





## Table of Contents

<b>Why Labconco?</b>	3	<b>PuriCare Procedure Stations</b>	
<b>PuriCare® At-a-Glance</b>		Features & Benefits	10
Steps to Selecting a PuriCare Enclosure	4	Ordering Information	11
PuriCare® Product Lines	5	Specifications	12
<b>PuriCare Open Access Stations</b>		Dimensional Data	13
Features & Benefits	6	Accessories	14
Specifications	7	<b>PuriCare Dual Sided Biosafety Cabinets</b>	
Dimensional Data & Ordering Information	8	Specifications & Ordering Information	22
Accessories	9	Dimensional Data & Accessories	23

# Lasting care.

**Safety.** Labconco's vivarium enclosures protect what matters most. Each product within the PuriCare line is engineered to provide unmatched safety for personnel, animals, and procedures. All while protecting the sensitive vivarium environment. We hold ourselves accountable for keeping you and your science safe.

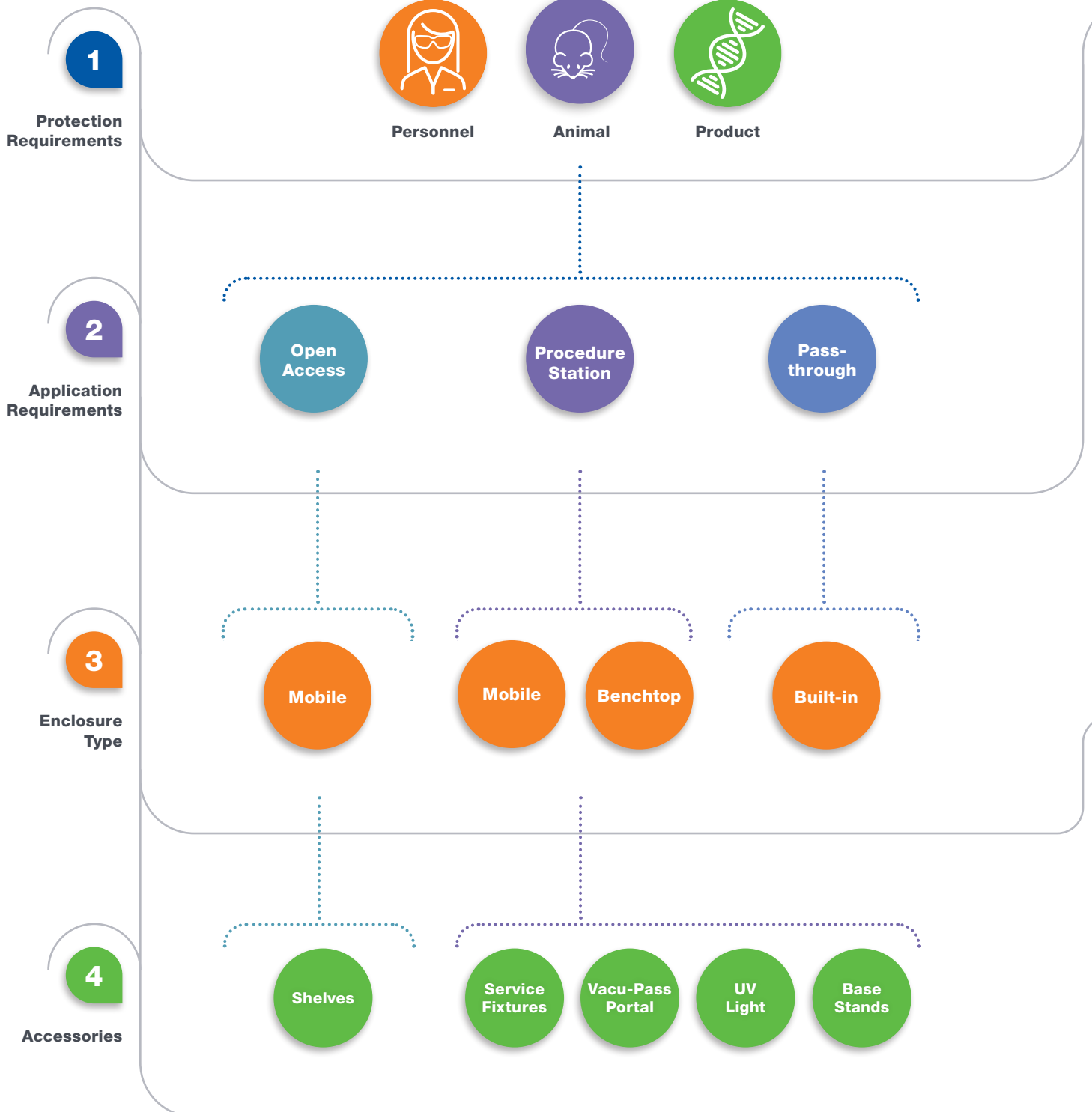
**Flexibility.** From everyday bedding changes to complex surgeries, PuriCare enclosures have your vivarium covered. From mobile stations to custom passthrough biosafety cabinets, we're committed to keeping you comfortable, and your vivarium clean and operating with ease.

**Quality.** Innovation, safety, and reliability have been at the forefront of our designs since 1925. We understand the challenges and demands of the vivarium environment. The quality of our products is the measure of our ability to fulfill our vision for protection of you and your science. It's our commitment to a higher standard, constant vigilance, and endless curiosity in support of your work.



# PuriCare® Animal Research Stations

## Steps to Selecting a PuriCare® Enclosure



# PuriCare® Animal Research Stations

## PuriCare® Enclosures



Open Access



Procedure Station



Pass-through



### Accessory Package



Service Fixture(s)



Vacu-Pass Portal



UV Light



Telescoping Stands



Hydraulic Stands

# PuriCare® Open Access Stations

## Features & Benefits



### Two 99.99% efficient HEPA filters

One located above and one below the work area, trap allergens.

### ISO 5 air

HEPA filtration provides ISO 5 air per ISO 14464-1 & 2.

### Angled sashes

Sash angle provides more ergonomic viewing. 1/4" thick, light-weight polycarbonate sashes are easy to clean.

### Two Minihelic\* pressure gauges

Monitor pressure across the HEPA filters.

### Large 14" (36 cm) high sash openings

Accommodate cages of various sizes. The two-position hinged sashes pivot up to 28" (71 cm) to allow full access from both sides to the interior for cleaning.

### Type 304 stainless steel dished work surface

Holds one liter of liquid and resists corrosion. The work surface may be easily removed for access to a catch pan and prefilters.

### Disposable upper and lower prefilters

Trap large particles to extend HEPA filter life.

### Low exterior height

78.1" (198 cm) height permits passage through standard doorways.

### Single pass airflow design

Helps prevent heat stress and odor build up.

### Retractable power cord (Models 3820000 and 3820010)

Extends up to 26 feet (8 meters) to facilitate mobility. Retraction brake prevents the cord from recoiling.

### Variable speed motor

Designed for low vibration and quiet operation. Speed controls permit adjustment by a qualified technician to prolong filter life.

### Electric hydraulic lift

Infinite working height from 36.5" to 45.0" (93 x 114 cm).

### Push/pull bars

Durable PVC-coated steel tubes with polyamide brackets facilitate transport.

### Large 5" (13 cm) casters

Non-marking polyurethane with toe breaks for easy transportation. Stainless steel bearings are quiet and corrosion-resistant.

### Drain hose

Easily accessible empty liquids that spill into the grilles. The line retracts within the cabinet when not in use.

### Generous work area

Accommodates standard rodent cages.

### Two fluorescent lights

Illuminate the interior and are accessible from either side for replacement.

\*Minihelic® is a registered trademark of Dwyer Instruments Incorporated.



# PuriCare® Open Access Stations

## Specifications & Ordering Information



### All models feature:

- Nominal downflow velocity of 55 fpm
- ISO 5 (Grade A) air per ISO 14464-1 & 2
- Single pass airflow design
- Type 304 stainless steel dished removable work surface that holds one liter of liquid
- Electric hydraulic lift to allow infinite working height adjustment from 36.5" to 45.0" (93 x 114 cm) with the push of a button
- Two recessed and angled sashes, 1/4" clear polycarbonate with bottom edges that angle inward. The two-position hinged sashes have 14" (36 cm) working height opening and pivot up to 28" (71 cm) for loading and cleaning
- 5" (13 cm) diameter, non-marking polyurethane casters with locks and stainless steel bearings
- Two Minihelic pressure gauges
- Two fluorescent lights, 25 watt on 4' models and 32 watt on 5' models
- ADA-compliant light and blower switches
- ADA-compliant electrical duplex with ground fault interruption and splash cover
- Two 99.99% efficient HEPA filters
- Disposable upper and lower prefilters
- Variable speed motor and impeller with speed controls

- Glacier white and slate gray powder-coated steel exterior
- Two push/pull bars of PVC-coated steel tubes with polyamide brackets on right side
- Retractable drain hose
- Factory prepared to accommodate up to six accessory shelves
- Three year limited warranty on parts and labor

### Models conform to the following regulations and standards:

- UL Standard 3101/61010-1 (115 volt models)
- CAN/CSA C22.2 No. 1010.1-92 (115 volt models)
- CE Conformity Marking (230 volt models)

### Models 3820000, 3820001, 3820010 and 3820011 also include:

- Retractable, 26' (8 m), 3-wire safety orange power cord with retraction brake and plug

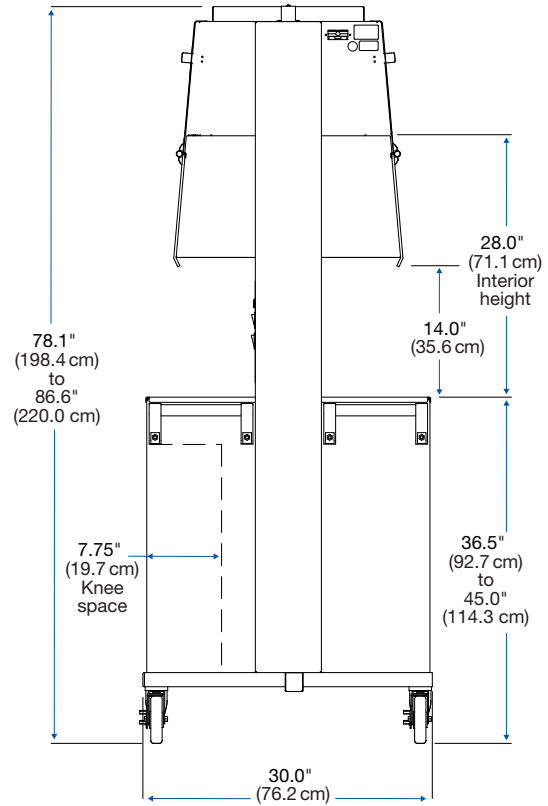
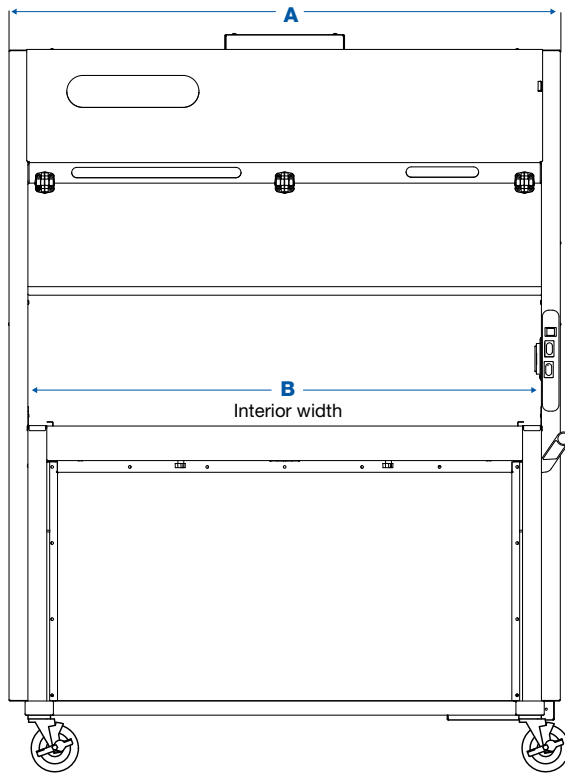
### Models 3820020, 3820021, 3820023, 3820024, 3820026, 3820028, 3820033, 3820034, 3820036 and 3820038 also includes:

- 10' (3 m) 3-wire cord. **A 230 volt plug is required.**



# PuriCare® Open Access Stations

## Dimensional Data & Ordering Information



Nominal Width	A	B
4'	48.4" (123.0 cm)	44.4" (123.0 cm)
5'	58.4" (148.3 cm)	48.5" (123.2 cm)

Catalog Number	Nominal Width	Work Surface Dimensions	Electrical Requirements	Plug Type	Shipping Weight
<a href="#">3820001</a>			115 volts, 60 Hz, 12 amps	115 volts, 15 amps	
<a href="#">3820011*</a>			100 volts, 50/60 Hz, 12 amps	100 volts, 15 amps	
<a href="#">3820021</a>	4'	38.0" w x 22.5" d (96.5 x 57.2 cm)	230 volts, 50/60 Hz, 6 amps	North America, 230 volts	598 lbs. (271 kg)
<a href="#">3820023*</a>				Schuko	
<a href="#">3820024*</a>				British (UK)	
<a href="#">3820026*</a>				China/Australia	
<a href="#">3820028*</a>				India	
<a href="#">3820000</a>	5'	48.0" w x 22.5" d (121.9 x 57.2 cm)	230 volts, 50/60 Hz, 6 amps	115 volts, 60 Hz, 12 amps	115 volts, 15 amps
<a href="#">3820010*</a>				100 volts, 50/60 Hz, 12 amps	100 volts, 15 amps
<a href="#">3820020</a>					North America, 230 volts
<a href="#">3820033*</a>				Schuko	
<a href="#">3820034*</a>				British (UK)	
<a href="#">3820036*</a>				China/Australia	
<a href="#">3820038*</a>				India	

\* International electrical configuration

# PuriCare® Open Access Stations

## Accessories



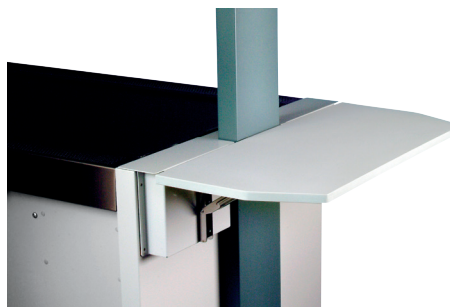
**3805000—Push/Pull Bars.** Additional set of push/pull bars for mounting on the left hand side of the Open Access Station. PVC coated steel tubes with polyamide brackets. Shipping wt. 5 lbs. (2.3 kg)

**3824000—Rodent Barricade.** Prevents renegade rodents from escaping during cage changing operations. Three 10" (25 cm) high, hinged acrylic panels have tabs that fit into grille perforations on one side of the Station so that operator may work from the opposite side. Shipping weight 2 lbs. (0.9 kg)



**Shelves.** 11.4" w x 14.0" d x 0.75" thick (29 x 36 x 2 cm). Shelf mounts on exterior front, or back, to provide flat surface to accommodate small items. Laminated, solid phenolic shelf holds loads up to 20 pounds, has a trigger to release the shelf and folds flat when not in use. Available for mounting on left hand or right hand side of enclosure. Open Access Station is factory-prepared to accept two shelves on each the right and left side. Shipping weight 10 lbs. (4.5 kg)

Catalog Number	Description
<b>3794901</b>	Shelf Kit, Right Side Installation
<b>3794900</b>	Shelf Kit, Left Side Installation



**3794902—End Shelf.** 30.0" w x 14.0" d x 0.75" thick (76 x 36 x 2 cm). Shelf mounts to either end to provide flat surface to accommodate small items. Laminated, solid phenolic shelf holds loads up to 20 pounds, has a trigger to release the shelf and folds flat when not in use. Shipping weight 20 lbs. (9 kg)



**Replacement Prefilters.** Pleated Air Filter. One each. The PuriCare Open Access Station requires two each exhaust and two each supply prefilters. Shipping weight 1 lb (0.5 kg)

Catalog Number	Nominal Width	Description	Quantity Required	Dimensions
<b>3768902</b>	4'	Exhaust	2	17.75" x 12.75" (45 x 32 cm)
<b>3768902</b>	4'	Supply	2	17.75" x 12.75" (45 x 32 cm)
<b>3789300</b>	5'	Exhaust	2	20.0" x 20.0" (51 x 51 cm)
<b>3768900</b>	5'	Supply	2	18.0" x 18.0" (46 x 46 cm)

# PuriCare® Procedure Stations

## Features and Benefits

### Class II Airflow

Provides Personnel, Product, and Environmental protection from hazardous pathogens and particles.

### Type A2

- Approximately 70% Recirculated, 30% Exhausted
- Recirculating or Canopy Ducted

### NSF 49 Listed

Each Labconco Class II BSC exceeds globally recognized performance and construction requirements.

### Unitized Construction

A welded 304 stainless steel cabinet hull, dished work surface, and solid steel plenum are built to last.

### Long-Life HEPA Filters

Dual filters are 99.99+% efficient (at 0.3 microns), providing ISO Class 5 or better air.

### Vivarium-ready

Large 12" sash opening for cages. Plus, a standard easy-change prefilter traps dander and particulates to extend HEPA filter life.

### Inclination Technology

A sloped sash, curved airfoil that functions as armrest, large working area, and eye-level display maximize comfort.

### Logic OS

Conveniently displays all cabinet information on a bright 5" line-of-sight touchscreen.

### Constant Airflow Profile™ (CAP)

Continuously monitors and maintains safe inflow and downflow to protect users and samples.

### Advanced ECM Blower

Combined with CAP™ technology, reduces energy consumption and noise, improving user comfort and safety.

### Mag-Zone™ Area

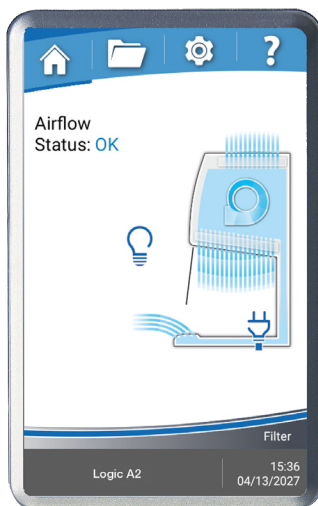
Unique storage area organizes your BSC and improves cleanability. Holds multiple accessories for pipettes, biohazard waste, and more.

### Effortless Disinfection

304 stainless steel interior withstands routine disinfection. Coved corners and dished work surface are easily cleanable.



## Logic OS Information Center



### Touchscreen Display

Large 5" screen clearly visualizes cabinet conditions for effortless monitoring of cabinet behaviors.

### Filter Life Indicator

Accurately displays remaining HEPA filter life. Alerts users at 20% and 10% before alarming at 0%.

### Airflow Status

Displays current status of airflow within cabinet for consistent confirmation of safety.

### Smart-Start™

Automatically start and stop your cabinet blower and lights by simply moving the sash.

### Night-Smart™

Keeps the cabinet interior clean between uses with minimal energy use.

### Alerts & Alarms

Large, clear visual and audible signals notify users of unsafe cabinet conditions.

### User Convenience

Logic OS includes a programmable experiment and UV light timer, data logging and a full certification menu.

### Data Logging & Connectivity

Export system data logs and records via USB, or connect to Logic OS remotely for 24/7 cabinet monitoring with Remote Communication Board accessory.



# PuriCare® Procedure Stations

## Ordering Information

### Catalog Number Configurator:

Use this key to configure the nine digit catalog number to order your PuriCare Procedure Station Class II, Type A2 Biosafety Cabinet.

3 1 2    2    0      

Select the **WIDTH** of your cabinet. This is the fourth digit of your catalog number.

**3** = 3'    **4** = 4'    **5** = 5'    **6** = 6'

Select the **ACCESSORY PACKAGE** option: service fixture(s), UV lamp and Vacu-Pass™ Cord & Cable Portal. This is the sixth digit of your catalog number.

**0** = None

**1** = Includes factory-installed right-side service fixture, UV lamp and a Vacu-Pass™ Cord & Cable Portal on each side.

Select the **ELECTRICAL CONFIGURATION** and **PLUG TYPE**. These are the eighth and ninth digits of your catalog number.

**02** = 115V, 60 Hz, 15/20A, with plug for North America

**12** = 230V, 50/60 Hz, with plug for North America

**22** = 100V, 50/60 Hz, 15/20A, with plug for Japan

**32** = 230V, 50/60 Hz, with Schuko plug

**42** = 230V, 50/60 Hz, with plug for China/Australia

**52** = 230V, 50/60 Hz, with plug for Great Britain (UK)

**72** = 230V, 50/60 Hz, with plug for India

### Plug Configurations



115V, 15A  
for North America  
100V, 15A for Japan  
(3' and 4' widths)



115V, 20A  
for North America  
100V, 20A for Japan  
(5' and 6' widths)



230V  
for North America



230V  
Schuko



230V  
for China/Australia



230V  
for Great Britain (UK)



230V  
for India

### Technical Specifications

Nominal Width	Energy Requirements*		Watts	Shipping Weight
	100V or 115V	230V		
3'	12A	6A	195	621 lbs. (282 kg)
4'	16A	8A	240	725 lbs. (329 kg)
5'	16A	8A	340	862 lbs. (391 kg)
6'	16A	8A	490	992 lbs. (450 kg)

\* Dedicated, non-GFI outlet required. Acceptable voltage range +/-10% nominal value.

# PuriCare® Procedure Stations

## Specifications



### All models feature:

- Long-life DC Electronically Commutated Motor (ECM)
- \* Constant Airflow Profile™ (CAP) airflow monitoring system
- \* BalanceFlow™ plenum provides energy-efficiency and ultra-quiet operation\*
- \* Easy clean top cover that promotes even exhaust airflow from the top cover
- \* Mag-Zone™ area on interior right side manages storage challenges with Labconco Magnetic Mag-Zone accessories
- Intrinsically-safe negative pressure design
- Fully scannable 99.99+% supply and exhaust HEPA filters. 99.999% efficient ULPA filters or H14 HEPA filters also available
- \* Logic OS and 5" interior-mounted, line-of-sight touchscreen information center with:
  - Smart-Start™ System allows user to start up and shut down cabinet functions by raising and lowering the sash
  - Night-Smart™ System for idling the blower when the sash is fully closed
  - Full operational maintenance and certification logs for detailed record keeping
  - Status line for alarm conditions and alerts to warn when filter life diminishes to 20% and 10% before alarming at 0%
  - Interval/elapsed timer for experiment monitoring
  - UV light timer (on models with UV)
  - Password protection for cabinet settings
  - 8 Languages
- Bright, glare-free LED lighting up to 180 foot-candles (1937 lux). Located outside the contaminated work area
- \* Curved, stainless steel inlet grille with waterfall design and Reserve-Air™ Secondary Airflow Slots
- \* Air-Wave™ Entry System at access opening to enhance containment

\* Labconco exclusive feature

- \* Contain-Air™ Negative Pressure Channel at top of sash to enhance containment
- \* Two electrical outlets. Flush mounted stainless steel cover with dampened hinges
  - 115V GFCI, double receptacles, maximum amperage draw 5A
  - 230V, single receptacles, maximum amperage draw 3A
- 10° angled, fully closing sash. 1/4" tempered safety glass with counterbalanced, anti-racking, easy-to-lift mechanism
- Unitized, pressure tested stainless steel interior. Optic White epoxy-coated steel exterior
- Removable towel catch with washable screen-type prefilter located under work surface
- 12" (30.5 cm) working sash height
- \* 22.5" (57 cm) max. sash opening & 27.0" (69 cm) viewing height
- Removable, seamless type 304 stainless steel, dished work surface with lift out knobs
- Nominal inflow velocity of 105 fpm (0.53 m/sec)
- Nominal downflow velocity of 55 fpm (0.28 m/sec). 6' x 12" sash models nominal downflow velocity of 50 fpm (0.25 m/s)
- Approximately 70% air recirculation
- Noise level <62.7 dB (4ft 12" model)
- 10' (3 m) power cord with plug
- Six year warranty

### Models conform to the following standards:

- NSF/ANSI Standard 49 listed
- ISO Class 5 (Grade A) per ISO 14644-1
- UL Standard 61010-1
- CAN/CSA 22.2 No. 61010-1
- CE/UKCA Mark (230V models)
- \* ADA-compliant

### Options include:

- Accessory Package: UV lamp (254 nm), right-side service fixture with ball-type valve and right and left-side Vacu-Pass™ Cord & Cable Portal
- Ventus™ II Canopy Connection: See page 18

### All models require (not included):

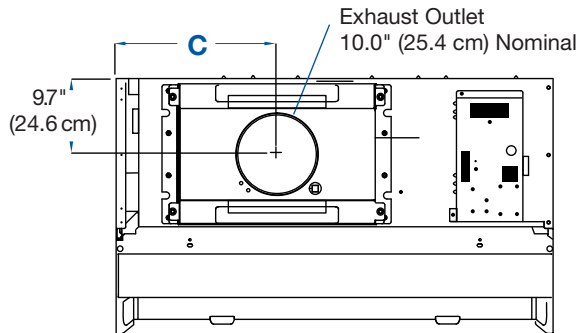
- Supporting base stand

\*U.S. Patent Pending



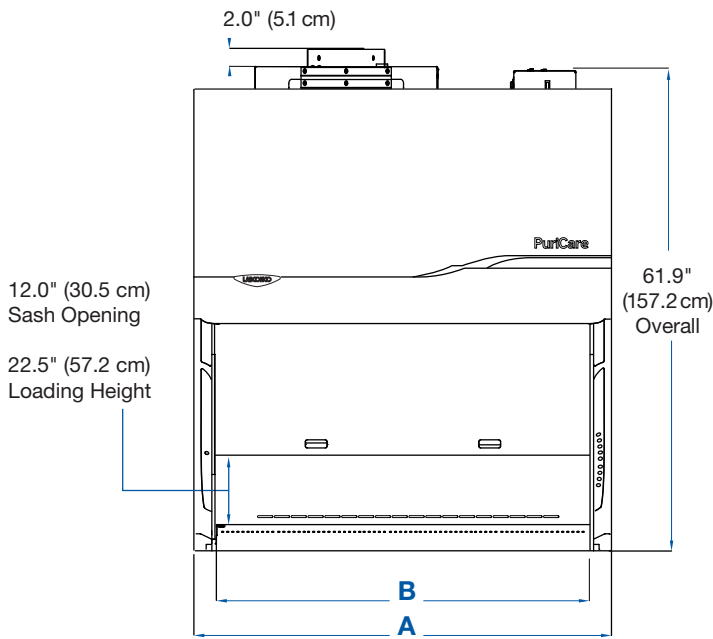
# PuriCare® Procedure Stations

## Dimensional Data

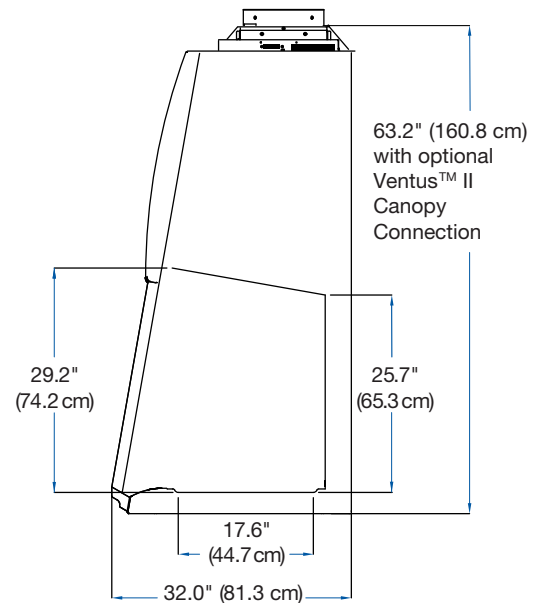


TOP

Nominal Width	A	B	C
3'	42.4" (107.7 cm)	36.5" (92.7 cm)	14.5" (36.8 cm)
4'	54.4" (138.2 cm)	48.5" (123.2 cm)	19.9" (50.5 cm)
5'	66.4" (168.7 cm)	60.5" (153.7 cm)	26.8" (68.1 cm)
6'	78.4" (199.1 cm)	72.5" (184.2 cm)	32.9" (83.6 cm)



FRONT



SIDE

Note: Shown without A2 (recirculating) Easy-Clean exhaust cover. Overall height with Easy-Clean cover is 61.9".

# PuriCare® Procedure Stations

## Accessories

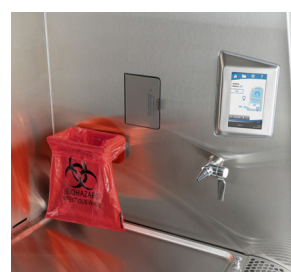


**Mag-Zone™ Accessory Area.** Area on right side of cabinet for use with Labconco Mag-Zone accessories. Provides an easy and safe way to organize tools in your cabinet with removeable, stainless steel accessories that can be easily decontaminated. Not compatible with PuriCare Procedure Station biosafety cabinets.

**3033000 - Mag-Zone Magnetic Pipette Rack.** Holds 4 standard lab pipettes and one standard pipette aid. Stainless steel, designed for use inside the PuriCare Procedure Station.



**3033100 - Mag-Zone Magnetic Waste Bag Holder.** Holds one standard benchtop biowaste bag. Stainless steel, designed for use inside the PuriCare Procedure Station.



**3033200 - Mag-Zone Magnetic Pipette Aid holder, single.** Holds one standard pipette aid. Stainless steel, designed for use inside the PuriCare Procedure Station.



**VACUUBRAND\* BVC Control Fluid Aspiration Systems.** Compact, user friendly, complete media aspiration system. Aspirator pen compatible with Pasteur pipettes and has adapter for standard pipette tips. Can support two users. Includes 12 L/min adjustable diaphragm pump, Autoclavable collection bottle, flow-through aspirator tube with pen and PTFE 0.2 micron filter. Shipping weight 26 lbs. (12 kg)

### Systems with 4L Polypropylene Collection Bottle

Catalog Number	Electrical Requirements	Plug Type
<b>Dimensions (l x w x h): 16" x 7.6" x 20" (41 x 19 x 50 cm)</b>		
<b>3850330</b>	115V, 50/60 Hz	115V, 15A

### Systems with 2L Borosilicate Glass Collection Bottle

Catalog Number	Electrical Requirements	Plug Type
<b>Dimensions (l x w x h): 16" x 7.6" x 17" (41 x 19 x 43 cm)</b>		
<b>3850340</b>	115V, 50/60 Hz	115V, 15A

Contact Labconco or visit [labconco.com](http://labconco.com) for 230V Aspiration Systems

# PuriCare® Procedure Stations

## Accessories



**8024600 – Logic Cell Culture Cart Pipette Insert Accessory.** Adds 6 extra compartments for storing various size serological pipettes. Shipping weight 4 lbs. (1.8 kg)



**8024700 - Logic Cell Culture Cart Side Shelf Accessory.** Two accessory side shelves for extra storage for bottles, gloves and other required items. Can mount to right or left side of cart for up to 4 shelves total. Shipping weight 5 lbs. (2.3 kg)



**8024500 - Logic Cell Culture Cart Interior Shelf.** Divides the lower storage area for added flexibility, adjustable height. Shipping weight 8 lbs. (3.6 kg)

**3852000—Turntable.** Lazy Susan rotates 360° to bring items within easy reach. Stainless steel surface and ball bearings. 12" (30 cm) dia. Autoclavable. Shipping weight 6.0 lbs. (2.7 kg)



**3859000—Interior Shelf.** Stainless steel shelf, 8.0" x 5.0" (20 x 13 cm), mounts to rear grille. Capacity: 2.2 lbs. (1 kg). Shipping weight 2.0 lbs. (0.9 kg)



**3859100—Cord Manager.** Includes three stainless steel hooks and carabiners. Mounts to rear grille. Shipping weight 2.0 lbs. (0.9 kg)



Shown with Accessory Pipette Insert and Side Shelves installed.

**8024400 - Logic Cell Culture Cart.** Provides compact storage for common cell culture supplies like serological pipettes, gloves, lab tissues and disinfectants. Top compartment holds ~4 boxes of gloves. Small lab tissues can be dispensed from the front and larger lab tissues can be dispensed from the top through a removable cover. Built-in handles and easy-clean casters make positioning/moving the cart simple. Compact height for storing under cabinet when not in use. Overall dimensions: 23.5" w x 19.0" d x 27.0" h (60 x 48 x 69 cm). Shipping weight 85 lbs. (38.5 kg)

**3689700—Ergonomic Chair.** 4-way articulating seat for personalized comfort. ISO Class 6 clean room compatible. Seat height adjusts from 19" to 26" (48–66 cm). Five-leg composite base with resistance casters, 24.4" (62.0 cm) wide. Black vinyl upholstery. **⚠ WARNING:** Cancer - P65Warnings.ca.gov (California only). Shipping weight 43 lbs. (19.5 kg)



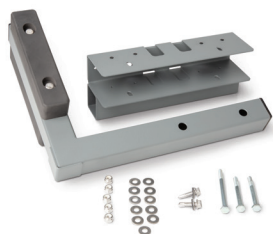
**3746000—Adjustable Footrest.** Ergonomic design reduces strain and fatigue while working. 18.5" w x 11.5" d x 8.0" h (47 x 29 x 20 cm). Shipping weight 6.0 lbs. (2.7 kg)



# PuriCare® Procedure Stations

## Technology Mounts

Labconco offers several solutions for mounting computer equipment to our base stands. The PC Mount kit attaches to any Labconco base stand and provides a secure mounting platform for clamp-style articulating arms.



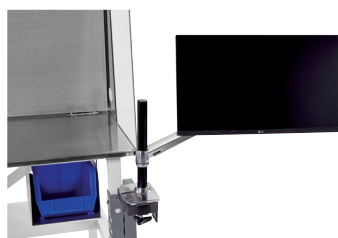
**5315000—PC Mount kit.** Provides a 4" w x 7" d (10.2 x 17.8 cm) area to secure most clamp-style mounting systems. Mounts on either the right or left side of the base stand. Compatible with all Labconco base stands (SoLo, Hydraulic and Telescoping). Mounting arms not included. See part numbers 3997300, 3997400 and 3997900. **Installation required.** Shipping weight 9 lbs. (4.1 kg)



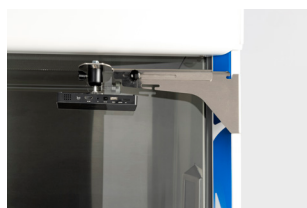
**3997900—Ergotron® WorkFit-LX Monitor and Keyboard Arms.** Polished Aluminum. Flexible design allows independent placement of the monitor and the keyboard. Capacity 7–25 lbs. (3.2–11.3 kg) PC Mount kit required and sold separately. **Installation required.** Shipping weight 35 lbs. (15.6 kg)



**3997400—Ergotron® LX Desk Laptop Arm.** Polished Aluminum. Allows independent placement of the laptop. Capacity 7–12 lbs. (3.2–5.4 kg) PC Mount kit required and sold separately. **Installation required.** Shipping weight 15 lbs. (6.8 kg)



**3997300—Ergotron® LX Desk Monitor Arm.** Polished Aluminum. Allows independent placement of the monitor or tablet. Capacity 7–25 lbs. (3.2–11.3 kg) Tablet case not included. PC Mount kit required and sold separately. **Installation required.** Shipping weight 11.2 lbs. (5.1 kg)



**3145000—Electronics Mount.** Provides a solid attachment point for a camera onto a Labconco Class II BSC. The articulating design includes 4-way movement and a 1/4" tripod mount to accommodate a variety of devices. Includes optional display screen for use with a projector. Attaches to BSC frame. Compatible with PuriCare Procedure Stations. **Installation required.** Shipping weight 6 lbs. (2.7 kg)

# PuriCare® Procedure Stations

## Accessories



**PuriCare Procedure Station Airflow Sensor.** Allows display of inflow and downflow velocities on screen. **Installation and certifier calibration required.**

Catalog Number	Cabinet	Shipping Weight
3277600	A2	2.0 lbs (0.9 kg)
3277610	A2 with Canopy	2.0 lbs (0.9 kg)



**Twist-lock Power Cord, 115V.** 15A – IEC-C13 connector with NEMA L5-15 plug or 20A – IEC-C19 connector with NEMA L5-20 plug. 12' length.

Catalog Number	Amperage	Shipping Weight
1366800	15	2.0 lbs (0.9 kg)
1366900	20	2.0 lbs (0.9 kg)



**3747500—Service Fixture Kit.** Includes serrated hose tip with ball valve, quarter turn control handle and hardware. Cabinets are factory-prepared for up to six fixtures. **Installation required.** Shipping weight 2.0 lbs. (0.9 kg)



**3289100 - UV Lamp Kit.** For field install of UV lamp into cabinets that were not factory equipped for UV. Includes 254 nm UV lamp and ballast. All voltages. **Installation required.** Shipping weight 5 lbs. (2.3 kg)



**IV Bar Kits.** Includes IV bar, mounting hardware and four hangers, two short and two long. Legacy PuriCare Procedure Station compatible. **Installation required.**

Catalog Number	Cabinet Width	Shipping Weight
3288900	3'	3.0 lbs. (1.4 kg)
3288901	4'	4.0 lbs. (1.8 kg)
3288902	5'	5.0 lbs. (2.3 kg)
3288903	6'	6.0 lbs. (2.7 kg)



**3282400—Vacu-Pass Cord & Cable Portal Kit.** NSF-approved portal allows passage of a cable through right- or left-side wall. Accommodates cords/cables with dia. of 1/8", 1/4", 3/8" and 1/2". **Installation required.** Shipping weight 1.0 lbs. (0.5 kg)

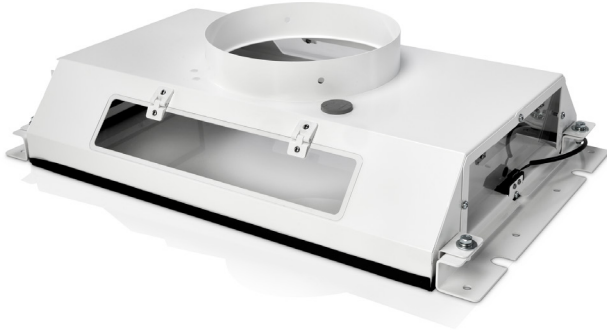
### 3408500—Sash-Glider Kit.

Cleans both sides of sash while cabinet is closed to avoid contamination risks. Includes two microfiber sheets and ten disposable scrubbing strips. Shipping weight 5.0 lbs. (2.0 kg). Replacement strips, (3408600) package of 25. Shipping weight 2.0 lbs. (0.9 kg)



# PuriCare® Procedure Stations

## Exhaust Accessories



**Ventus II Canopy Connection.** For thimble exhausting Type A2 cabinets. NSF approved design detects insufficient exhaust in less than one second and signals Logic OS with visual and audible alarms. Alarm increases motor to maximum speed for personnel safety. Adds only 1.4" (3.6 cm) to cabinet height. Epoxy-coated steel. Collar is 10" (25.4 cm) ID. Exhaust connection is required. **Air-tight Damper (3776800) recommended.** Contact Labconco for information on factory installation. Shipping weight 75 lbs. (34 kg)

### Flex Duct Connection.



Catalog Number	Length	Shipping Weight
7034800	1'	5 lbs (2.3 kg)
7034801	3'	10 lbs (4.5 kg)
7034802	6'	15 lbs (6.8 kg)
7034803	10'	25 lbs (11.3 kg)

**3776800—Air-Tight Damper.** Mounts atop Ventus Canopy to adjust exhaust airflow and closes for decontamination procedures. Manually adjustable. Type 304 stainless steel. 10" (25.4 cm) high with 10" (25.4 cm) dia. OD inlet & outlet. Shipping weight 14 lbs. (6.3 kg)



**3858800—Backdraft Damper.** Mounts in vertical duct run to prevent reversal of flow of the exhaust system. 3.0" (8 cm) high with 10" (25.4 cm) dia. OD inlet and outlet. Shipping weight 2.0 lbs. (0.9 kg)



**Spectrum Blowers. Recommended for canopy-ducted Type A2 and C1 BSCs.** Phenolic-coated impeller and housing, epoxy-coated steel base, weather cover and ECM motor. Contact Labconco with questions about blower sizing and other blowers available.



Catalog Number	For Use With	Required Exhaust Volume* CFM @ x" w.g.
		12" Sash
3889210	3' Type A2	380@0.04"
3889211	4' Type A2	539@0.15"
3889212	5' Type A2	704@0.24"
3889213	6' Type A2	913@0.38"

\* Exhaust volumes listed are concurrent balance values obtained in the exhaust duct via traverse methodology. Actual volume may be lower using Direct Inflow Measurement methodology.

**3289000 - Logic Remote Communication Board.** Kit includes three dry contact relays, USB data output, RS-232 RJ45 data output and an Ethernet pass-through. Factory installed on Type B2 Cabinets. **Installation required. For Type A2 cabinets only.** Shipping weight 1.0 lb (0.5 kg).



Catalog Number	For Use With**	Electrical Requirements	HP	Shipping Weight
177050100	Type A2	115/230V, 50/60 Hz, 1 phase, 10/6A	1	150 lbs. (68 kg)

### Blower Dimensions

	177050100	177250200
Inlet	10.9" (27.7 cm) ID	12.25" (31.1 cm) OD
Outlet	10.0" w x 5.5" d (25.4 x 14 cm)	13.5" w x 7.0" d (34.3 x 17.8 cm)
Blower Transition Adapter Required	4722401	7003400

# PuriCare® Procedure Stations

## Telescoping Base Stand



Optic White stand with accessory caster kit shown

### Standard Features

- Unassembled design ships on pallet with biosafety cabinet
- Telescoping legs are adjustable to eight height positions at installation in 1" (2.5 cm) increments to provide a working height from 30" (76 cm) to 37" (94 cm)\*
- Durable Optic White epoxy-coating
- Optic White stands feature three pass-throughs in rear panel. Pass-through not available on Glacier White stands
- Supports loads up to 1,000 lbs. (454 kg)
- Durable 1.75" steel frame
- Fixed leveling feet
- NSF approved
- ADA-compliant

### Catalog Number Configurator:

Use this key to configure the seven digit catalog number to order your Optic White unassembled telescoping base stand.

5 1 7 1   0

Select the **NOMINAL STAND WIDTH** of your cabinet. This is the fifth digit of your catalog number.

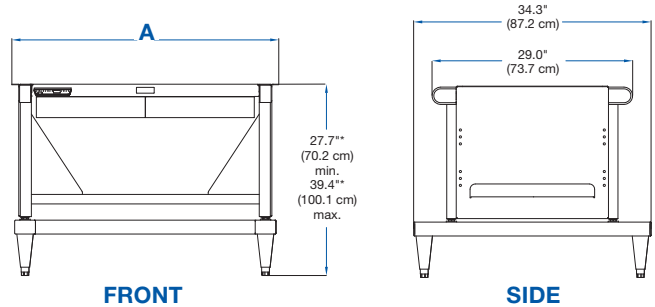
- 3 = 3'
- 4 = 4'
- 5 = 5'
- 6 = 6'

Select the **TYPE OF FEET** required. This is the sixth digit of your catalog number.

- 0 = Leveling Feet
- 1 = Casters

# PuriCare® Procedure Stations

## Universal Hydraulic Base Stand



Nominal Width	A	Shipping Weight
3'	38.6" (98.0 cm)	178 lbs. (81 kg)
4'	50.6" (128.5 cm)	227 lbs. (103 kg)
5'	62.6" (159.0 cm)	261 lbs. (118 kg)
6'	74.6" (189.5 cm)	295 lbs. (134 kg)

### Standard features

- For Optic White PuriCare Procedure Stations
- Supports loads up to 1,000 lbs. (454 kg)
- Durable epoxy-coated Optic White steel frame
- Infinitely adjustable for working heights of 28–40" (71–101.6 cm)
- Four user-programmable memory positions
- Leveling feet or 5" (12.7 cm) diameter, toe-locking, glass-filled nylon casters that are resistant to most chemicals.
- Front-accessible up/down switch, right or left side compatible
- Programmable safety stops to limit upper and lower travel

**5190300—Seismic Kit, Hydraulic Base Stand.** Secures hydraulic base stand to floor. Includes stainless steel brackets and hardware for attachment to stand. **Floor hardware and installation required.** Shipping weight 12 lbs. (5.4 kg)

### Catalog Number Configurator:

Use this key to configure the seven digit catalog number to order your Universal Hydraulic Base Stand.

5 1 8

Select the **TYPE OF FEET** required. This is the fourth digit of your catalog number.

0 = Leveling Feet    1 = Casters

Select the **NOMINAL STAND WIDTH**. This is the fifth digit of your catalog number.

3 = 3'    4 = 4'    5 = 5'    6 = 6'

Select the **ELECTRICAL CONFIGURATION** and **PLUG TYPE**. These are the sixth and seventh digits of your catalog number.

00 = 115V, 15A, 60 Hz, with plug for North America

10 = 230V, 50/60 Hz, with plug for North America

30 = 230V, 50/60 Hz, with plug for Schuko plug

40 = 230V, 50/60 Hz, with plug for China/Australia

50 = 230V, 50/60 Hz, with plug for Great Britain (UK)

70 = 230V, 50/60 Hz, with plug for India

### Plug Configurations



115V, 15A  
for North America



230V  
for North America



230V  
Schuko



230V  
for China/Australia



230V  
for Great Britain (UK)

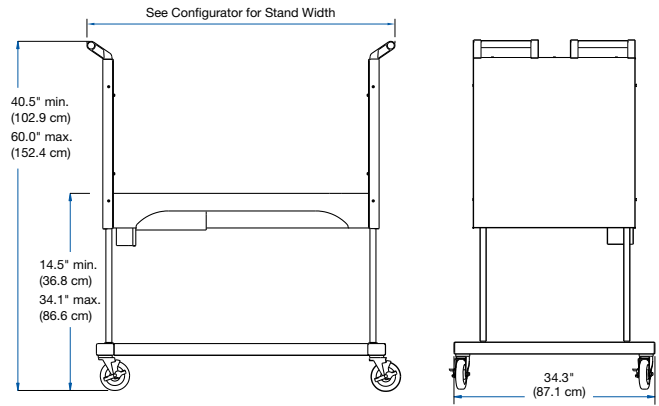


230V  
for India

\*Contact Labconco for Glacier White hydraulic base stands for Legacy PuriCare Procedure Stations.

# PuriCare® Procedure Stations

## SoLo™ Hydraulic Lift Base Stand



FRONT

SIDE

### Standard Features

- For Optic White PuriCare Procedure Stations
- Hydraulic lift provides flexible height adjustment and permits passage through standard doorways as low as 75.5" (191.7 cm) high for A2 cabinets.
- Infinitely adjustable height provides work surface heights from 17.0" (43.2 cm) to 37" (94.0 cm).
- Supports loads up to 1,000 lbs. (454 kg)
- 5" (12.7 cm) dia., toe-locking, glass-filled nylon casters. Resistant to most chemicals, easy-clean and maintenance-free.
- Durable epoxy-coated steel construction
- Two handle bars facilitate transport.
- NSF-approved

### Catalog Number Configurator:

Use this key to configure the seven digit catalog number to order your SoLo Hydraulic Base Stand.

5 1 8 5

Select the **NOMINAL WIDTH** of your cabinet. This is the fifth digit of your catalog number.

- 3** = 3' Overall Stand Width 53.6" (136.2 cm)  
Shipping Weight: 390 lbs. (177 kg)
- 4** = 4' Overall Stand Width 65.6" (166.7 cm)  
Shipping Weight: 420 lbs. (190 kg)
- 5** = 5' Overall Stand Width 77.6" (197.2 cm)  
Shipping Weight: 460 lbs. (209 kg)
- 6** = 6' Overall Stand Width 89.6" (227.6 cm)  
Shipping Weight: 500 lbs. (227 kg)

Select the **ELECTRICAL CONFIGURATION** and **PLUG TYPE**. This is the sixth digit of your catalog number.

- 00** = 115V, 15/20A, 60 Hz, with plug for North America
- 10** = 230V, 50/60 Hz, with plug for North America
- 30** = 230V, 50/60 Hz, with Schuko plug
- 40** = 230V, 50/60 Hz, with plug for China/Australia
- 50** = 230V, 50/60 Hz, with plug for Great Britain (UK)
- 70** = 230V, 50/60 Hz, with plug for India

### Plug Configurations



115V, 15A  
for North America



230V  
for North America



230V  
Schuko



230V  
for China/Australia



230V  
for Great Britain (UK)



230V  
for India

\*Contact Labconco for Glacier White SoLo base stands for For Legacy PuriCare Procedure Stations

# PuriCare® Dual Sided Biosafety Cabinets

## Specifications & Ordering Information



### All models feature:

- Nominal inflow velocity of 105 feet per minute (fpm) at 12" high sash opening
- Nominal downflow velocity of 55 fpm
- ISO 5 (Grade A) air per ISO 14464-1 & 2
- Intrinsically-safe negative pressure design
- \* Contain-Air™ Negative Pressure Channel
- Two 99.99% efficient HEPA filters (one supply and one exhaust)
- Prefilters below the work surface to remove large particles and prolong HEPA filter life

- Two ECM blowers with automatic speed compensation
- Lower-mounted motor/blower with voltage-compensating speed controls
- Type 304 stainless steel diffuser and removable work surface
- Stainless steel and glacier white powder-coated steel exterior
- Fully-closing, 1/4" thick tempered safety glass sashes with anti-racking mechanism and 17.75" (45 cm) loading height opening
- Two "clean side"-mounted, Minihelic\* pressure gauges for monitoring differential pressure across the upper and lower HEPA filters
- Two 25-watt fluorescent lights
- Airflow monitor mounted on "clean side" with three-light indicator and audible/visual alarm
- Light and blower switches operable from either side
- Audible/visual sash alarms mounted on both sides that alert the operator when both sashes are open
- Two interior-mounted electrical duplexes with ground fault interruption and splash covers
- 12" ID outlet for exhaust through a canopy to the outside or vent back into facility
- Single point top-mounted internal junction box for hard wiring by a qualified electrician
- Designed to seal to the floor for efficient through-the-wall installation
- Stainless steel mounting angles and panels to finish and seal gaps between the wall and exterior of the cabinet
- Full three year limited warranty on parts and labor (excluding filters)

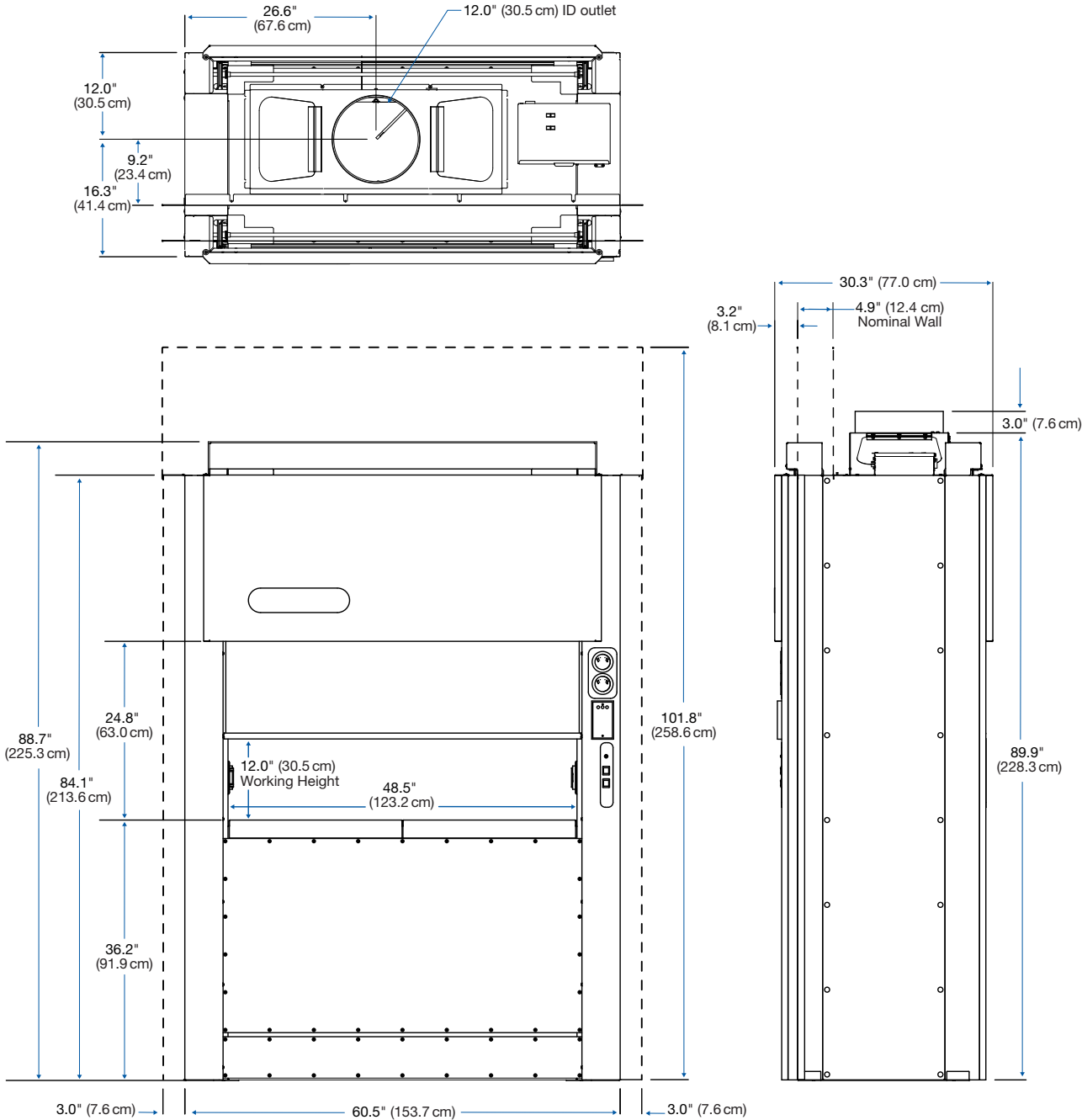
Catalog Number	Electrical Requirements	Shipping Weight
3230001	115 volts, 50/60 Hz, 30 amps	950 lbs. (431 kg)
3230021	230 volts, 50/60 Hz, 15 amps	

\*Minihelic® is a registered trademark of Dwyer Instruments Incorporated.

\* Contain-Air™ Labconco exclusive feature

# PuriCare® Dual Sided Biosafety Cabinets

## Dimensional Data & Accessories



**3789300—Replacement Exhaust Prefilter.** 20" w x 20" h x 1" deep (51 x 51 x 3 cm). Pleated Air Filter. One each. The PuriCare Dual Sided Biosafety Cabinet requires two each Exhaust Prefilters. Shipping weight 1 lb. (0.4 kg)

**Visit [labconco.com](https://labconco.com) to request information  
for all Labconco products.**

**LABCONCO CORPORATION**

8811 Prospect Avenue  
Kansas City, MO 64132

(800) 821-5525 | (816) 333-8811

[labconco.com](https://labconco.com)



©2024 LABCONCO CORPORATION

Product design subject to change without notice.

4-57-8/19/2024

