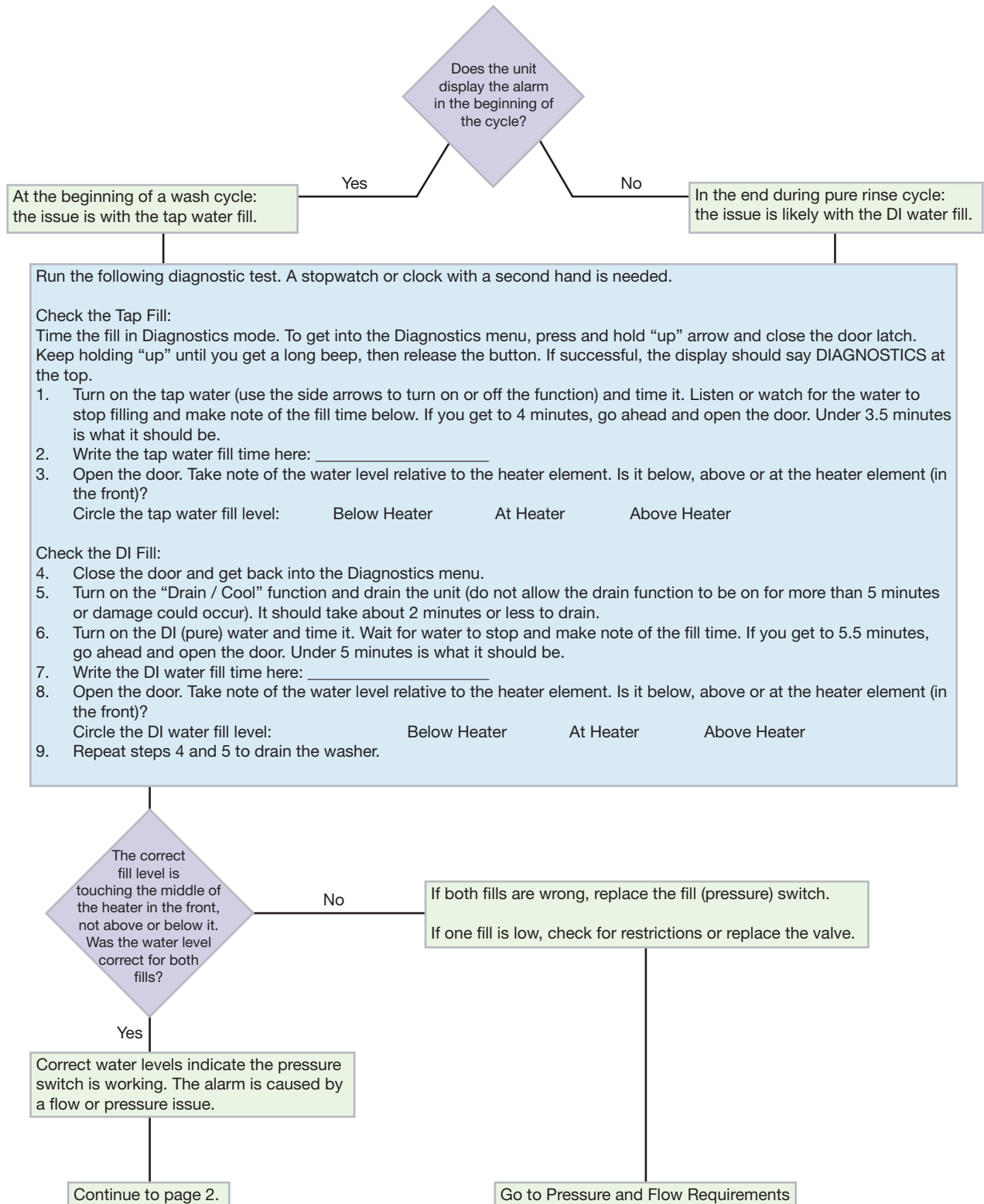


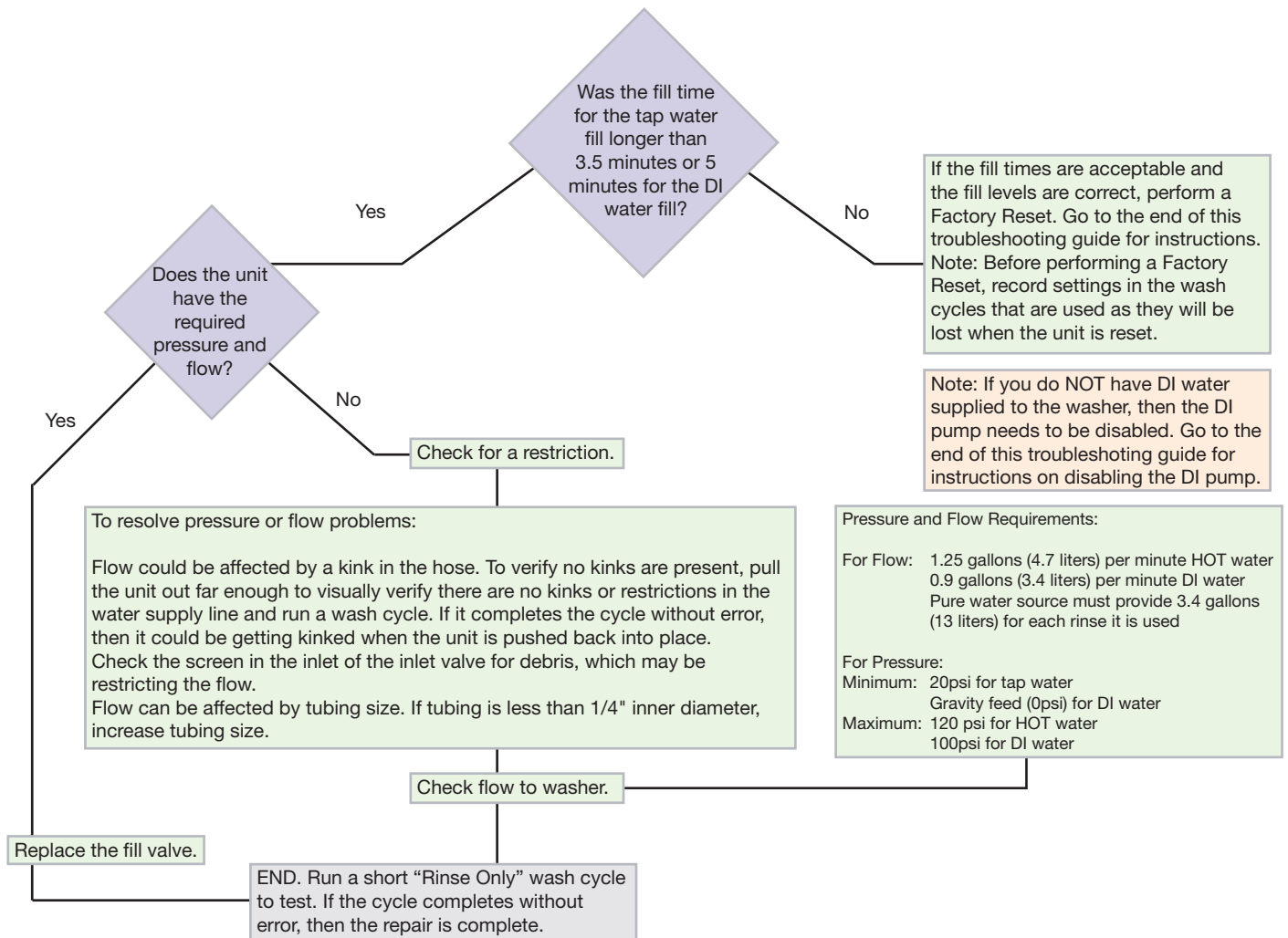


Troubleshooting Low Water Alarm in Glassware Washers





Troubleshooting Low Water Alarm in Glassware Washers



Setup Menu - This menu is used when you need to perform a Factory Reset or Disable Pure Water.

To Disable Pure Water: Get into the setup menu and change the "DI pump enable" setting to "No."

To perform a Factory Reset: Get into the setup menu and change the "Factory Reset" setting to "Yes."

Note: Before performing a Factory Reset, record settings in the wash cycles that are used. Factory Reset will reset all programs to original factory settings.

To get into the Setup Menu:

1. Start with the door open.
2. Press and hold the "down" arrow, close the door and latch it; keep holding the "down" arrow until you get a long beep.
3. Release the button and the screen should say SETUP at the top.

Up and down arrows will allow you to change which function you want to control.

Turn on (and off) any function by pressing the left or right arrow (either one).

When you have a function changed, you **must** press "Run" to save it.