

GENERAL DESCRIPTION

5' Protector XL Laboratory Hood, 31.7" Exterior Model: 111500021

- Exterior Superstructure
- Double Wall Construction * Cold Rolled Steel
- Interior Superstructure
- Galvanized Steel (standard)
- Left / Right Facia:
- Powder Coated Steel * Color: Glacier White
- Liner Material
- Molded Composite Sheet
- Slide Panels
- Both Sides * Removable * Color: Glacier White
- Boffices
- Molded Composite Sheet
- Interior Access Panels
- Right and Left Sides
- Gasket Provided
- Corner Post with Access Covers
- Right and Left Sides
- Cold Rolled Steel
- Air Foil
- Cold Rolled Steel * Powder Coat Finish

- Sash
- Vertical Travel
- Tempered Safety Glass
- Counter Weighted and Balanced
- Pulley System

- Electrical Fixtures
- LED Light and Tubes w/ Switch
- Alarm / Monitor (Sold Separately)
- Factory Prepared for Air Flow Monitor/Alarm

- Wiring
- Fume Hood Wired at Factory
- Electrical Connection made inside 4x7 Junction Box
- 208-230, 50/60 Hz
- Service Fixtures

- Labonco * Color-Coded Hooded Handle * Front Loading
- Parts included to convert standard fixtures to Vacuum or Air

- Plumbing
- Connections Made with Swagelok Compression Fittings
- Final connection by others
- Field installed by others
- Standard Water Piping is 1/2" Copper Tubing
- Air and Vac Piping is 1/4" Copper Tubing
- Standard Gas Piping is 1/4" Brass Tubing

- Work Surface (Sold Separately)
- Black Epoxy Work Surface, Model 95005-XX (See below for XX)
- # 00 - No cup sink cutouts
- # 01 - Cup sink cutout right rear location
- # 02 - Cup sink cutout right side location
- # 10 - Cup sink cutout left rear location
- # 20 - Cup sink cutout left side location
- # 11 - Cup sink cutouts left and right rear locations
- # 22 - Cup sink cutouts left and right side locations

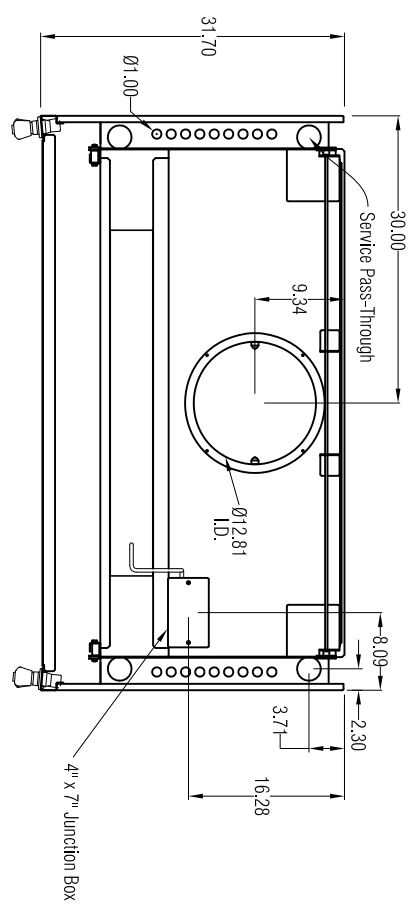
- Cup Sink (Sold Separately)
- Black Oval Polypropylene Cupsink, 3" x 6", # 4005200
- Required Accessories (Sold Separately)
- Remote Blower
- Supporting Base

Symbol	Service	Color
CW	Cold Water	Green
GV	Gas	Blue
Air	Compressed Air	Orange
Vac	Vacuum	Yellow

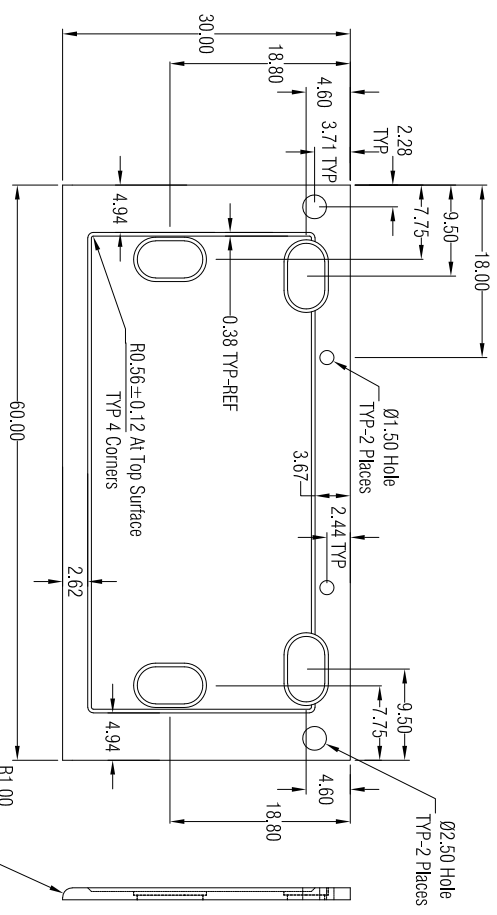
Face Velocity (fpm)	Airflow Volumetric Rate (CFM) @ Static Pressure (inches of water)
100	955 @ 0.34"
80	765 @ 0.22"
60	575 @ 0.12"

Assembly and Crating
 * Pre-Assembled
 * Palletized

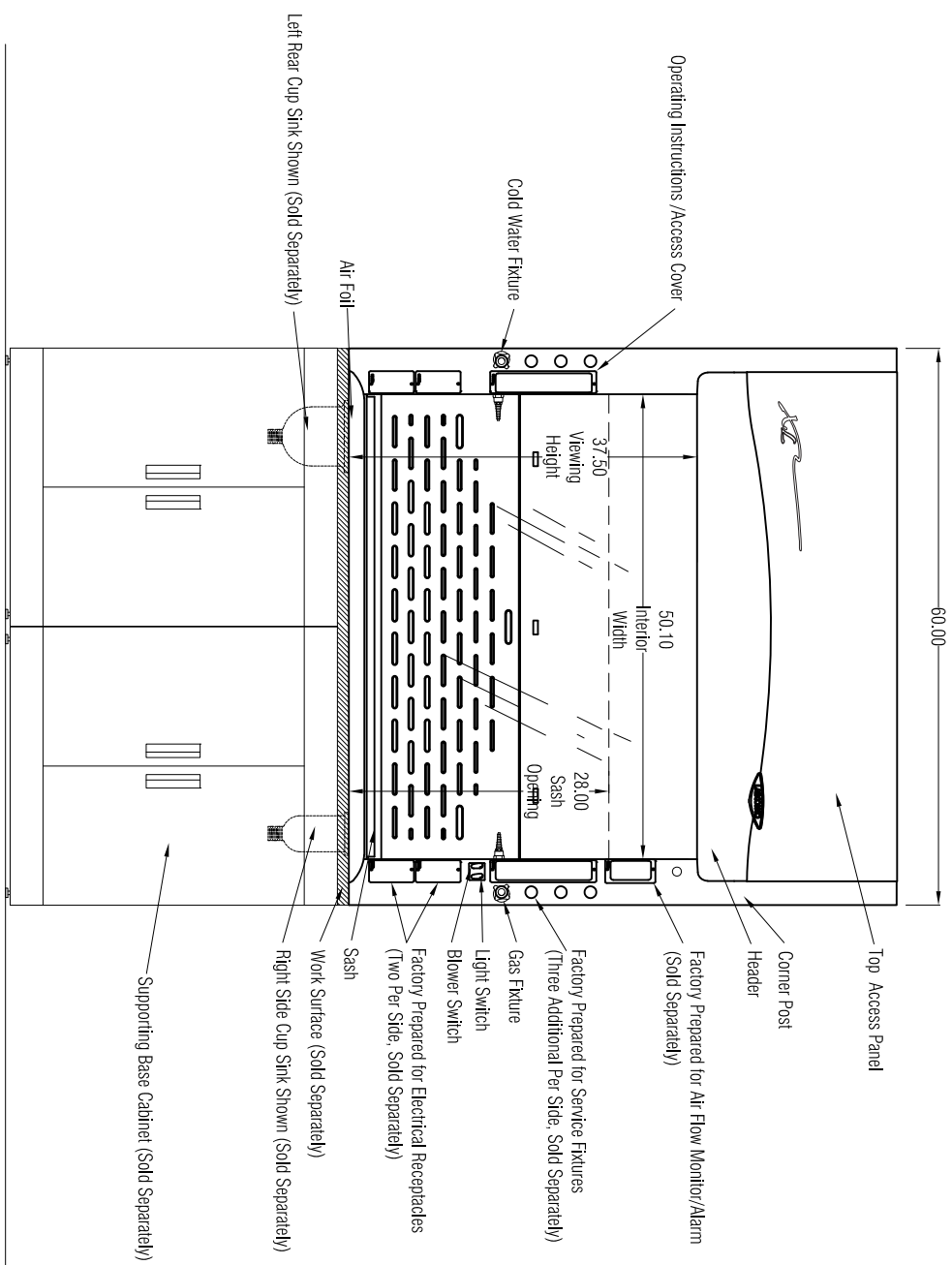
SCALE: Scaled to fit



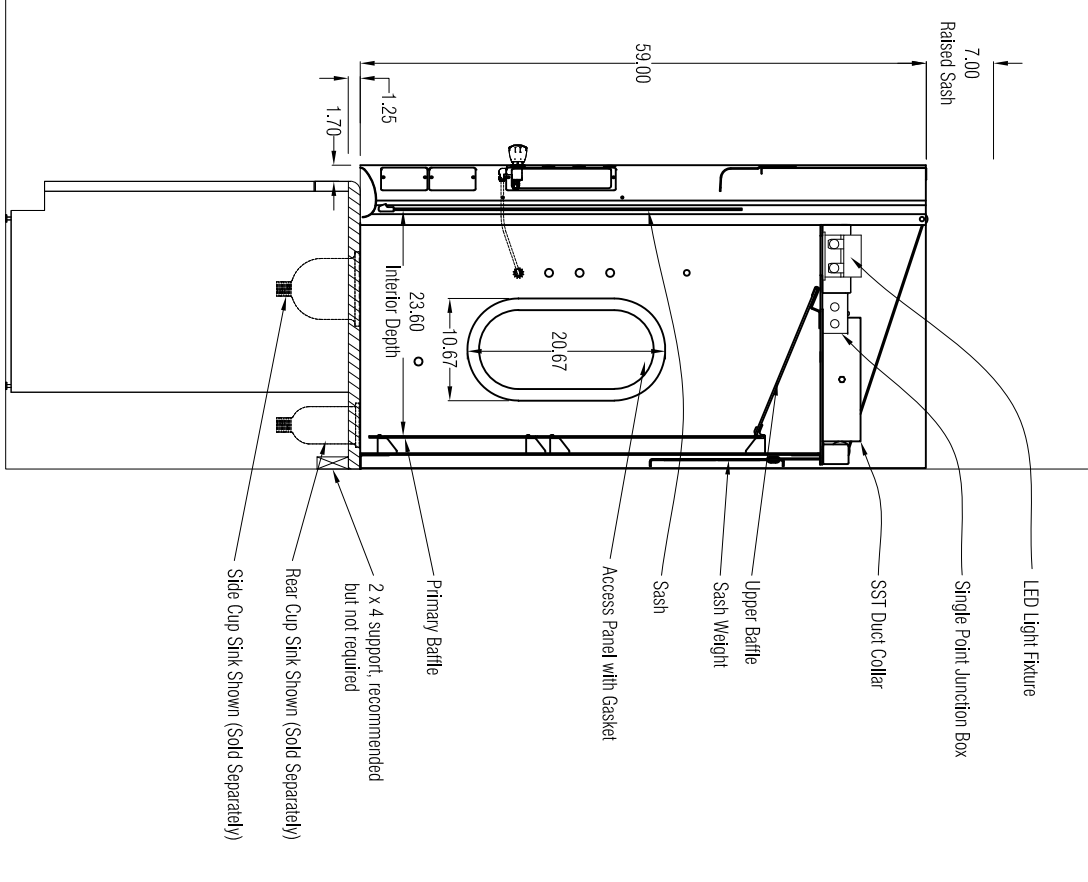
TOP VIEW



WORK SURFACE (Sold Separately) 95005-XX (See General Description for XX value) Model number varies based on sink location selection



FRONT VIEW



SIDE VIEW



LABCONCO CORPORATION • KANSAS CITY MO USA 64132
 800-821-5525 / 816-333-8811 • labconco.com

FUME HOODS for:

Rev	Date

Date: June 2023
 Drawing #: 111500021
 Drawn By: C. Alumbaugh
 Checked By:
 Approved By:
 Steel No.: