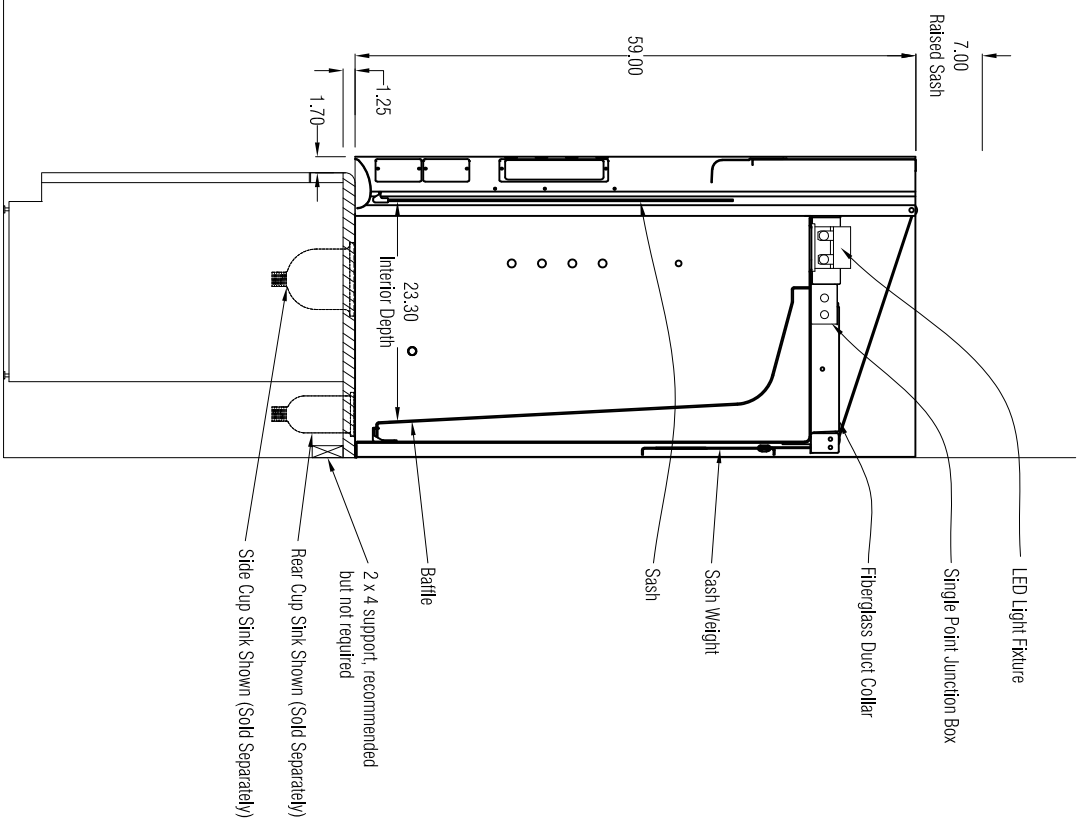
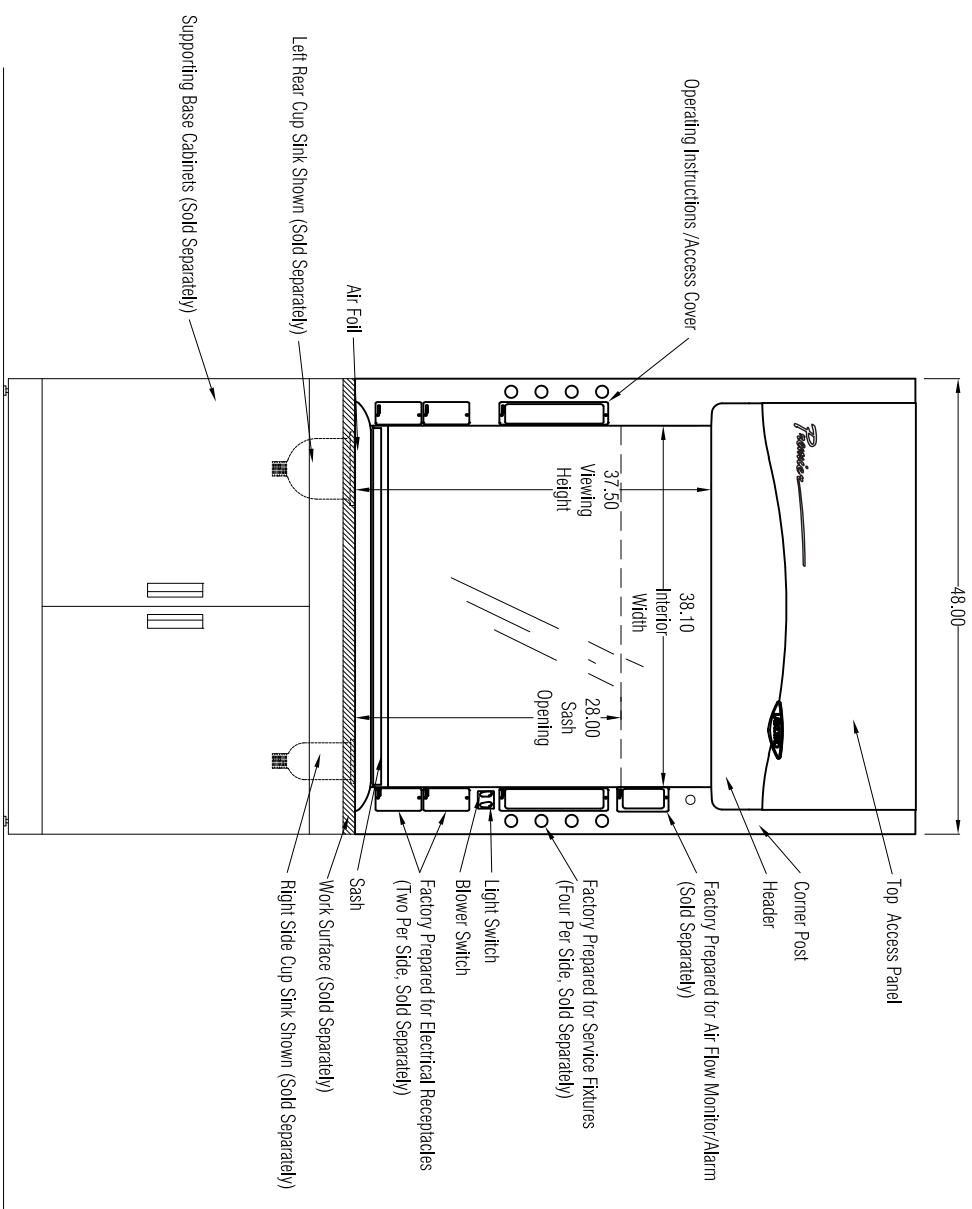
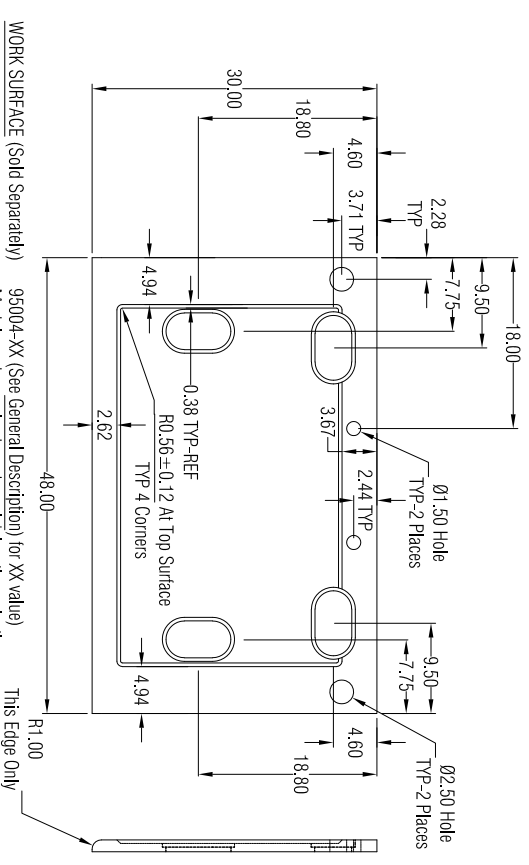
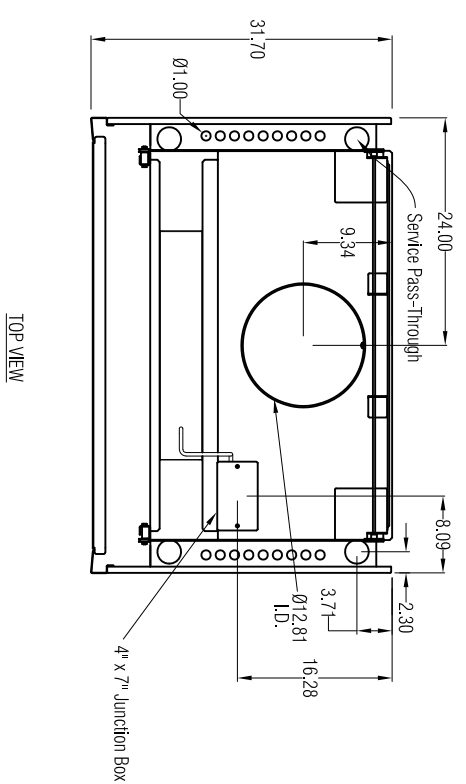


GENERAL DESCRIPTION

4' Protector Premier Laboratory Hood
Model: 100400000

- Exterior Superstructure
- * Double Wall Construction * Cold Rolled Steel
- Interior Superstructure
- * Galvanized Steel (standard)
- Left / Right Facior:
- * Powder Coated Steel * Color: Glacier White
- Liner Material
- * Molded Fiberglass Reinforced Polyester Resin Side Panels
- * Both Sides * Removable * Color: Glacier White
- Boffices
- * Molded Fiberglass Reinforced Polyester Resin Interior Access Panels
- * None
- Corner Post with Access Covers
- * Right and Left Sides
- * Cold Rolled Steel
- Air Foil
- * Cold Rolled Steel * Powder Coat Finish
- SASH
- Vertical Travel
- * Tempered Safety Glass
- * Counter Weighted and Balanced
- * Pulley System
- Electrical Fixtures
- * LED Light and Tubes w/ Switch
- Alarm / Monitor (Sold Separately)
- * Factory Prepared for Air Flow Monitor/Alarm Wiring
- * Fume Hood Wired at Factory
- * Electrical Connection made inside 4x7 Junction Box
- * 100-115V, 50/60 Hz
- Service Fixtures (Sold Separately)
- * Factory Prepared for Service Fixtures, Four Per Side
- Work Surface (Sold Separately)
- * Black Epoxy Work Surface, Model 95004-XX (See below for XX)
- * # 00 - No cup sink cutouts
- * # 01 - Cup sink cutout right rear location
- * # 02 - Cup sink cutout right side location
- * # 10 - Cup sink cutout left rear location
- * # 20 - Cup sink cutout left side location
- * # 11 - Cup sink cutouts left and right rear locations
- * # 22 - Cup sink cutouts left and right side locations
- Cup Sink (Sold Separately)
- * Black Oval Polypropylene Cupsink, 3" x 6", # 4005200
- Required Accessories (Sold Separately)
- * Remote Blower
- * Supporting Base



FRONT VIEW

SIDE VIEW

Face Velocity (fpm)	100% open (28")	62.5% open (18")
100	725 @ 0.22"	450 @ 0.09"
80	580 @ 0.14"	365 @ 0.06"
60	435 @ 0.08"	270 @ 0.03"

Assembly and Crating
* Pre-Assembled
* Politerized

SCALE: Scaled to fit



LABCONCO CORPORATION • KANSAS CITY MO USA 64132
800-821-5525 / 816-333-8811 • labconco.com

FUME HOODS for:

Rev	Date
Date:	June 2023
Drawing #	100400000
Drawn By:	C. Alumbaugh
Checked By:	
Approved By:	
Sheet No.	